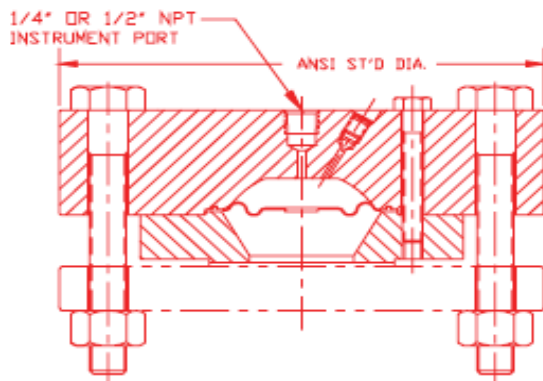




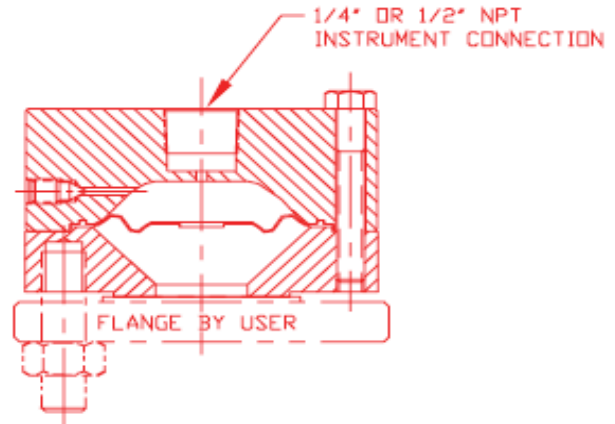
Low Pressure Application Elastomer Diaphragm Flanged Seal Types LC & LD

Model Specific Information

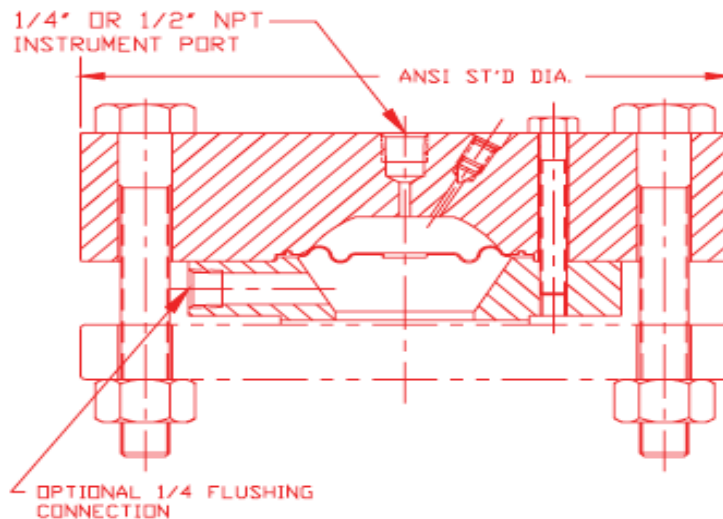
- ✓ **LC** models are **flange attached**.
- ✓ **LD** models are **flange attached with flushing connection**.
- ✓ **Plugs** for flushing connection **are not supplied** and must be ordered as parts.
- ✓ For **socket weld (tubing)**, use **process connection size** (5th character) to indicate **tube diameter**.
- ✓ For **socket weld (pipe)**, use **process connection size** (5th character) and **schedule** (10th character) to indicate **pipe size**.
- ✓ Note that **316SS bolting** may **not** offer sufficient strength for ANSI rated pressure.



TYPE LC
2" - 4" CLASS 150 THRU 600 ANSI ST'D



TYPE LC
1/2", 3/4" CLASS 150 THRU 1500 ANSI ST'D
1" & 1-1/2" CLASS 150 THRU 600 ANSI ST'D



TYPE LD
2" - 4" CLASS 150 THRU 600 ANSI ST'D

Master Gauge Co.



WHEN UNDER PRESSURE THINK OF US!